



# The Spirit

Byron Presbyterian Church July-August 2008

## The Basics

- Sunday Worship happens at 9:45 AM
- Sunday School begins in September.
- Nursery Care is available for young children
- Church office phone is 548-2800
- Contact Pastor James Renfrew at 548-2800 or 638-6679.

## Inside this issue:

|                 |   |
|-----------------|---|
| Contact Info    | 2 |
| Prayer Chain    | 2 |
| Pastor's Letter | 3 |
| Session Notes   | 4 |
| Church News     | 5 |
| Birthdays       | 6 |
| Youth Ministry  | 7 |

## Youth Mission Trip - Getting Ready for August

We will be heading off to Orleans County for two weeks of youth mission work, August 4th to 7th, and August 18th to 21st. It's going to be a great experience for the youth and adults who have signed on to participate.

We expect to be doing service projects with Project Hope in Waterport, Agribusiness Child Development in Holley, and Genesee-Orleans Min-

istry of Concern in Albion.

Project Life offers a summer camp experience to children from Afghanistan, Chechnia, Bosnia and Sri Lanka who have been traumatized by war or natural disaster. ACD provides an educational program for children of migrant workers. The Ministry of Concern offers a variety of services to children, families and the elderly.



Your help is needed! Look inside for details about prayer partners, food donations, and other kinds of investments that will make our Mission Trip a success.

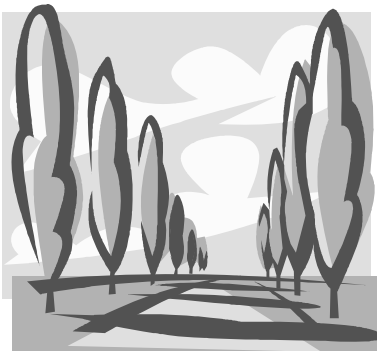
## Outdoor Worship, Sunday, July 27th

Each summer we enjoy an outdoor worship service in the park next to the church. This year the date is Sunday, July 27th, the day after the Byron heritage Festival, at 9:45 AM.

Bring a lawn chair or blanket and enjoy God's great outdoors.

Throughout the summer we will have refreshments on the front porch at the end of each Sunday service, thanks to the members of the Fellowship Committee who take turns in providing all the goodies.

We hope you have a wonderful summer, filled with God's many blessings!



## Church Information

Sunday Worship & Sunday School: 9:45 AM

Church Office: 548-2800 [byronfpc@localnet.com]

**Church Web Page:** [www.byronfpc.org](http://www.byronfpc.org)

Pastor: *James Renfrew*  
548-2800 office, 813-2934 cell)

Clerk of Session: *James Lundmark*

Treasurer: *Robin Glazier*

Organist: *Elizabeth Weber*

Board of Trustees: *Tom Nesbitt*

Sexton: *Rhonda Hickey*

Secretary: *Janet Pike*



## Green Light!

So many obstacles in our way each day! Can we ever move forward? Prayer is a way to find new direction, to open closed doors, to see the green light God offers to the faithful. Our Prayer Chain team is ready to help you find that green light!

Please contact Laura Platt or Jean Roda. Please call them with your prayer, so that everyone can pray with you. **Ready, Set, Go!**

## Work Day at the Church, Saturday, July 12th

The Trustees of the church have scheduled a work day on Saturday, July 12th, beginning at 9:00 AM.

There will be low-altitude work involving gardening, mulching and weeding.

There will also be medium and high-altitude work involving painting and window-washing.

Please bring work gloves, garden tools, paint brushes and ladders.

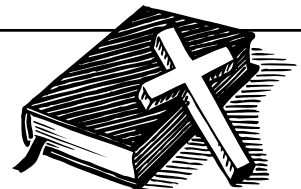
For more information, please contact Tom Nesbitt.



## Preaching Themes for July and August

Prepare for Sunday worship by reading the Bible story for the day!

|         |                                  |        |                  |             |
|---------|----------------------------------|--------|------------------|-------------|
| JULY 6  | Elder Eric George preaching      | AUG 10 | Matthew 14:22-32 | "Wind"      |
| JULY 13 | Matthew 13:1-9 "Test"            | AUG 17 | Matthew 15:21-28 | "Help Me!"  |
| JULY 20 | Matthew 13:31-33 "Nest"          | AUG 24 | Matthew 16:13-20 | "Keys"      |
| JULY 27 | Matthew 13:44-52 "Quest"         | AUG 31 | Matthew 16:21-28 | "Jerusalem" |
| AUG 3   | Matthew 14:13-21 "Loaves & Fish" |        |                  |             |



## From the Pastor

Dear Friends,

Jesus' "Parable of the Mustard Seed" is one of the preaching texts during July. It's one of my favorites. It encourages us to see how small things can grow and multiply. For a small congregation such as ours, it reflects our aspiration to be much more than we are!

Every dream we have for our ministry, for a lively, Christ-inspired, mission-committed congregation begins with the small steps we take this very day ... a smile, a hug, a kind word, a phone call, a visit, a promise, a risk, a prayer.

There is an old story about snow flakes weighing nothing, yet one snow flake when added to many others causes a mighty tree branch to break. May the seed of faith in your life be the one that makes the difference!

Always in the Hope and Peace of Christ,

*Jim Renfrew*

## Deacons in Action

The Deacons meet every month on the second Sunday following worship.

We are discussing restarting the new neighbor welcome program. There is interest from other community groups in starting something similar, so we will be trying to set up a meeting with interested parties in the future.

We continue to collect food items for the emergency food program through the Salvation Army. The Salvation Army is also happy to get grocery bags. Any and all nonperishable food

items are welcome, especially peanut butter, saltine crackers, cereal, rice, pork and beans, and canned vegetables.

The Deacons would like to remind all members of the church that there is a library of Christian Books available at the church, and any and all are encouraged to sign out a book and enjoy.

Deacons send out "get well" and "sympathy" cards as needed, and maintain contact with homebound church members. [*Pam Lynch*]

## Summer Events in Town

The town will be hosting a fundraiser for the families who survived the tragic fire in May. It will be Tuesday, August 12th, 6:30-8:30 PM, at the Town Park. The Cummings Family will perform. Anyone wishing to assist or having ideas to help bring in donations, please call Town Clerk Debra Buck-Leaton at the Town Hall, 548-7123, ext. 10.

The **Byron Dig** will begin on July 19 and run to August 9th. With ever-rising costs, Laura Platt would be grateful for any donations of produce. The Dig is run with volunteers and many students have limited funds. Donations would help keep the cost affordable.

The Town will have its **Town-Wide Garage Sales** on Saturday, July 19, beginning at 9:00 AM. To have your address listed please call the Town Hall, 548-7123, ext. 10. Any who would like to set up a table in the church park are welcome to do. Bring your own tables as needed. There are some nice shady spots.

**Heritage Day** will be Saturday, July 26, Parade at 11:00 AM, with a Chicken BBQ at Noon at the Fire Hall, with fun activities all day in the park.



*"So choose seven from among you whom everyone trusts, people full of the Holy Spirit and good sense ..."*

Acts 6:3 - the calling of the first Deacons

## Session Notes

At the June meeting Elders were presented with the results of the recent Natural Church Development survey that some of our church members filled out. The survey is designed to identify strengths and weaknesses in the church's plan for ministry. It also encourages session to develop a plan to address the weakest factors of our ministry.

Linda Badger Becker, Genesee Valley Presbytery staff, visited session to review the results. Of the "Eight Quality Characteristics" measured by the survey, "Passionate Spirituality" showed as our church's Minimum Factor.

Pastor Jim Renfrew will be attending a second NCD training program in Chicago in September, and he is consulting with three other congrega-

tions that have taken the survey.

***"Our research indicates that the important thing is not a church's style, but the degree to which faith is actually lived out with commitment, passion, and enthusiasm. This is what sets growing churches apart from non-growing ones."***

from Color Your World  
With Natural Church

## Wall of Faith!

Our Membership Committee has been working hard to prepare a "Wall of Faith" at the back of the sanctuary. The purpose is to post photos of all church participants with a label so we can learn each other's names more easily. Photos are being taken this month to add to the wall. Many thanks to Harley George and Jerry McCracken for designing the wall, and Dr. Catherine Mathes for taking the digital photos.

## Church Directory

Our Church Secretary, Janet Pike, has typed up a new Membership Directory for use by church members. It will be available at the beginning of July. If you are unable to get to church, contact the church office and we will send you one!

## We Get Letters

Send us  
a  
letter!

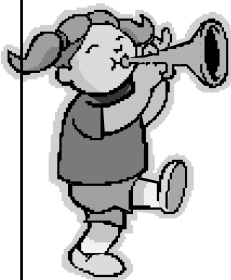
## Hospital Protocol

If you wish to have our pastor visit you during a hospital stay, please notify the church office. Due to privacy guidelines, hospitals no longer contact churches with information about hospitalized church members.

## Thank You!

The Trustees are very appreciative for the number of people who have volunteered to mow the church lawn this summer.

## ***Byron Nursery School***



The Byron Nursery School is accepting registrations for the fall. Our teacher Kelly Fancher and aide Marie Pribek are eager to work with young children for a second year. There are classes for three and four-year-olds. For more information, please call Carrie at 548-2544 or Laura at 548-2245.

## ***Tables & Chairs***

With graduation and other parties coming up here is information about borrowing tables and chairs: Folding tables and chairs may be loaned to church members free of charge. Non-members are charged a fee of \$5 per table plus \$5 for each set of five chairs. Those wishing to borrow these must make arrangements well in advance with the Church Secretary, 548-2800. Please note: only the older tables may be borrowed from the church. Borrowed items must be returned within 24 hours.

!

## [www.byronfpc.org](http://www.byronfpc.org)

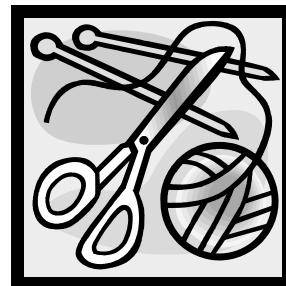
Find out the latest information about the Byron Presbyterian Church on our web page. All you have to do is enter "www.byronfpc.org" in your computer and our church home page will appear.

Did you miss Sunday's service? Look for the sermon here! Also, we are now featuring on our web page direct links to the testimony of Presbyterian mission workers serving in a variety of interesting places around the world.



## *Prayer Shawl Ministry*

Please contact the church office if you would like to participate in or support this ministry of love. There is no charge for a shawl - they are a labor of love - except that we welcome donations of 3 skeins (same color) of yarn for each prayer shawl. More than 40 shawls have been offered to people in the church and community. Let us know if you or someone who might enjoy receiving a prayer shawl.



# Youth Ministry News

## *Thank You!*

Thanks to all who helped raise mission trip funds at the games arcade on Memorial Day. Also, many thanks for all who helped with our Car Wash at the end of May. We raised \$278 at the car wash. Special thanks to the Byron Fire Department for allowing our group to use the fire hall facilities for the car wash.

## *Summer Mission Project - August*

We're planning to take church youth on a mission trip to the Albion area for two different weeks in August: August 4th to 7th, and August 18th to 21st. We are excited to see the names of youth and adults being added to the sign-up list in the sanctuary. We have about a dozen so far.

We plan to work with migrant children at **Holley Agribusiness Child Development** and at **Project Life** with children from Afghanistan, Chechnya and Bosnia who are recovering from war-trauma, and with the **Genesee Orleans Ministry of Concern**.

During July we will post a list of the food contributions we will need during the mission trip. We are very pleased to have the prayer and financial support of the people of the church.

## *Camp Whitman Summer Fun*

We have an energetic group of children registered for summer programs at Camp Whitman on Seneca Lake. Upon their return expect to hear incredible stories about tipped over canoes, hikes in the moonlight, giant mosquitoes, and a strange food called "s'mores"!



## *Paper Retriever Program*

We want everyone's newspaper, magazines, office and school papers, shopping catalogs, mail, envelopes, folders, fax and copy paper, colored paper! Can we collect 4 tons or more per month???? We (the youth group) get paid \$15 per ton - it's FREE MONEY! Ask your family and friends for ALL OF THEIR PAPER! Bring it to the bins behind the church - it's that easy! No cardboard, please.

## *St. Jude Bike-a-Thon*

Laura Platt reports that the St. Jude's Children's Hospital Bike-a-Thon that normally takes place in May, will be taking place in September. Watch for more information.


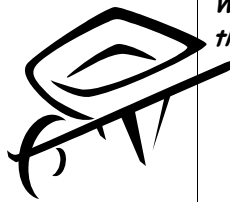
## *Byron Summer Rec Program*

The Byron Summer Youth Recreation Program will start its second year, running weekdays, from June 30 through August 22, except for July 4th. The program takes place in the town park behind the Byron Fire Department. Hours are 10 am until 1 pm. We have an exciting summer planned.

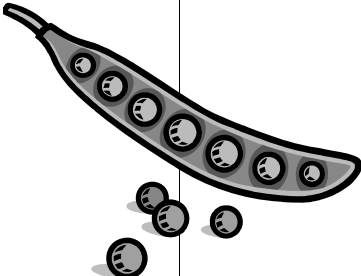


On Mondays we will have folk singer Allen Hopkins. He plays a variety of instruments and has an encyclopedic knowledge of songs to share. This music project is made possible with funds from the Decentralization Program, a Re-grant Program of the New York State Council on the Arts, Administered by the Genesee-Orleans Regional Arts Council. On Tuesdays we will have the Byron-Bergen Library visit. On Wednesday we will have tennis. On Thursdays we will have field trips or other special visitors.

The Summer Rec Program is open to all children ages 5 and older. You may register your children when dropping them off for the program.

# Byron Presbyterian Church - July 2008

| Sun  | Mon  | Tue   | Wed  | Thu  | Fri  | Sat  |
|--|--|---|--|--|--|--|
| <p><i>Register now for the Byron Nursery School</i></p>                  | <p><b>T.O.P.S</b><br/>.<br/><b>Every Tuesday at 6:15</b></p> | <p><b>1</b></p>   | <p><b>2</b></p>  | <p><b>3</b></p>  | <p><b>4</b><br/><b>Fourth of July</b></p>  | <p><b>5</b></p>  |
| <p><b>6</b><br/>9:45 Wor-ship<br/>10:45 Porch Fel-<br/>lowship</p>       | <p><b>7</b><br/><br/><b>6:30 PM</b></p>                      | <p><b>8</b></p>   | <p><b>9</b><br/><b>7:30 PM</b><br/><b>Mem-<br/>bership<br/>Commit-</b></p> | <p><b>10</b></p>   | <p><b>11</b></p>  | <p><b>12</b><br/><br/>9:00 AM<br/>Work Day at<br/>the Church</p> |
| <p><b>13</b><br/>9:45 Wor-ship<br/>10:45 Porch Fel-<br/>lowship</p>      | <p><b>14</b></p>   | <p><b>15</b></p>  | <p><b>16</b></p>   | <p><b>17</b></p>   | <p><b>18</b></p>   | <p><b>19</b></p>   |
| <p><b>20</b><br/>9:45 Wor-ship<br/>&amp; Commu-<br/>nion<br/>10:45</p>   | <p><b>21</b></p>   | <p><b>22</b><br/><br/><i>Special Presbytery Meeting at Corfu PC</i></p> | <p><b>23</b><br/><br/>8:30 PM - AA</p>                                     | <p><b>24</b></p>   | <p><b>25</b></p>   | <p><b>26</b><br/><br/>9:00 AM<br/>Byron Heritage Festival</p>    |
| <p><b>27</b><br/>9:45 AM<br/>Outdoor<br/>Worship<br/>10:45<br/>Porch</p> | <p><b>28</b></p>   | <p><b>29</b></p>  | <p><b>30</b></p>   | <p><b>31</b></p>   | <p></p>  | <p></p>  |

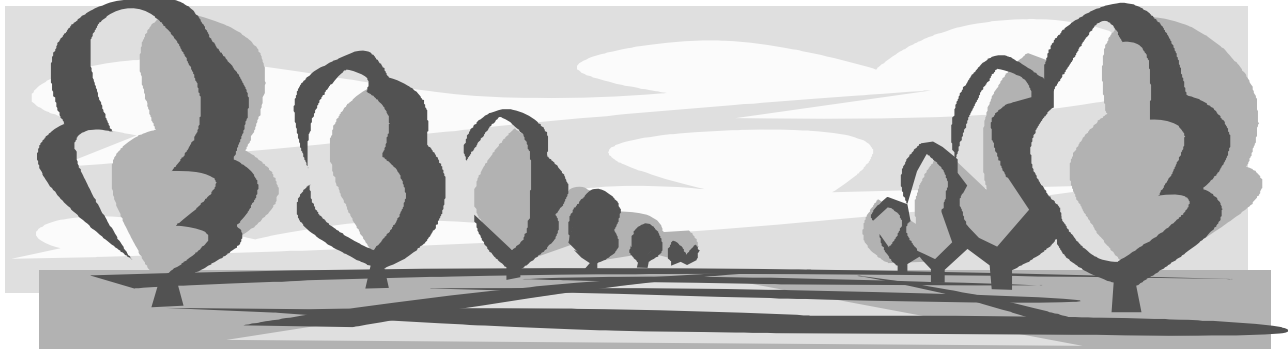
# Byron Presbyterian Church - August 2008

| Sun  | Mon  | Tue   | Wed  | Thu                                      | Fri       | Sat  |
|--|--|---|--|--|-----------|--|
| <p><i>Register now for the Byron Nursery School!</i></p>                   |  | <p><i>T.O.P.S. Meets every Tuesday at 6:15 PM</i></p>                         |  |  | 1         | 2<br><br>9 am - 4 pm<br>Flea market & Craft Sale at Stone Church                             |
| <p><b>3</b><br/>9:45 Worship<br/>10:45 Porch Fellowship</p>                | <p><b>4</b><br/><b>Mission Trip</b><br/><br/>6:30 PM<br/>Nursery School Board</p>                    | <p><b>5</b><br/><b>Mission Trip</b></p>                                       | <p><b>6</b><br/><b>Mission Trip</b><br/><br/>8:30 pm - AA</p>                      | <p><b>7</b><br/><b>Mission Trip</b></p>  | 8         | 9<br><br> |
| <p><b>10</b><br/>9:45 Worship<br/>10:45 Porch Fellowship</p>               | <b>11</b>  | <p><b>12</b><br/>6:30-8:30 PM<br/>Benefit for Local Families at Town Park</p> | <p><b>13</b><br/><br/>8:30 pm - AA</p>   | <b>14</b>                                | <b>15</b> | <b>16</b>  |
| <p><b>17</b><br/>9:45 Worship And Communion<br/>10:45 Porch Fellowship</p> | <p><b>18</b><br/><b>Mission Trip</b></p>   | <p><b>19</b><br/><b>Mission Trip</b></p>                                      | <p><b>20</b><br/><b>Mission Trip</b><br/>7:30 PM Trustees<br/>8:30 pm - AA</p>     | <p><b>21</b><br/><b>Mission Trip</b></p> | <b>22</b> | <b>23</b>  |
| <p><b>24</b><br/>9:45 Worship<br/>10:45 Porch Fellowship</p>               | <p><b>25</b></p>  | <b>26</b>   | <p><b>27</b><br/><br/>8:30 pm - AA</p>   | <b>28</b>                                | <b>29</b> | <b>30</b>  |
| <p><b>31</b><br/>9:45 Worship</p>  |  |   |  |  |           |  |

# *Worship in the Park*

*Sun., July 27, 9:45 AM*

*Bring a lawn chair or a blanket!*



1<sup>st</sup> Presbyterian Church  
P.O. Box 206  
Byron NY 14422-0206

U.S. Postage Paid  
Non-Profit Org.  
Permit No. 8  
Byron NY 14422